

Customer :

customer

Customer part :

customer part

Comment :

Comment

S1=4.71

S2=5.22

Tmax=461

Tp S2=500.0

PI=0.47

HI=85

Sample =1745.80

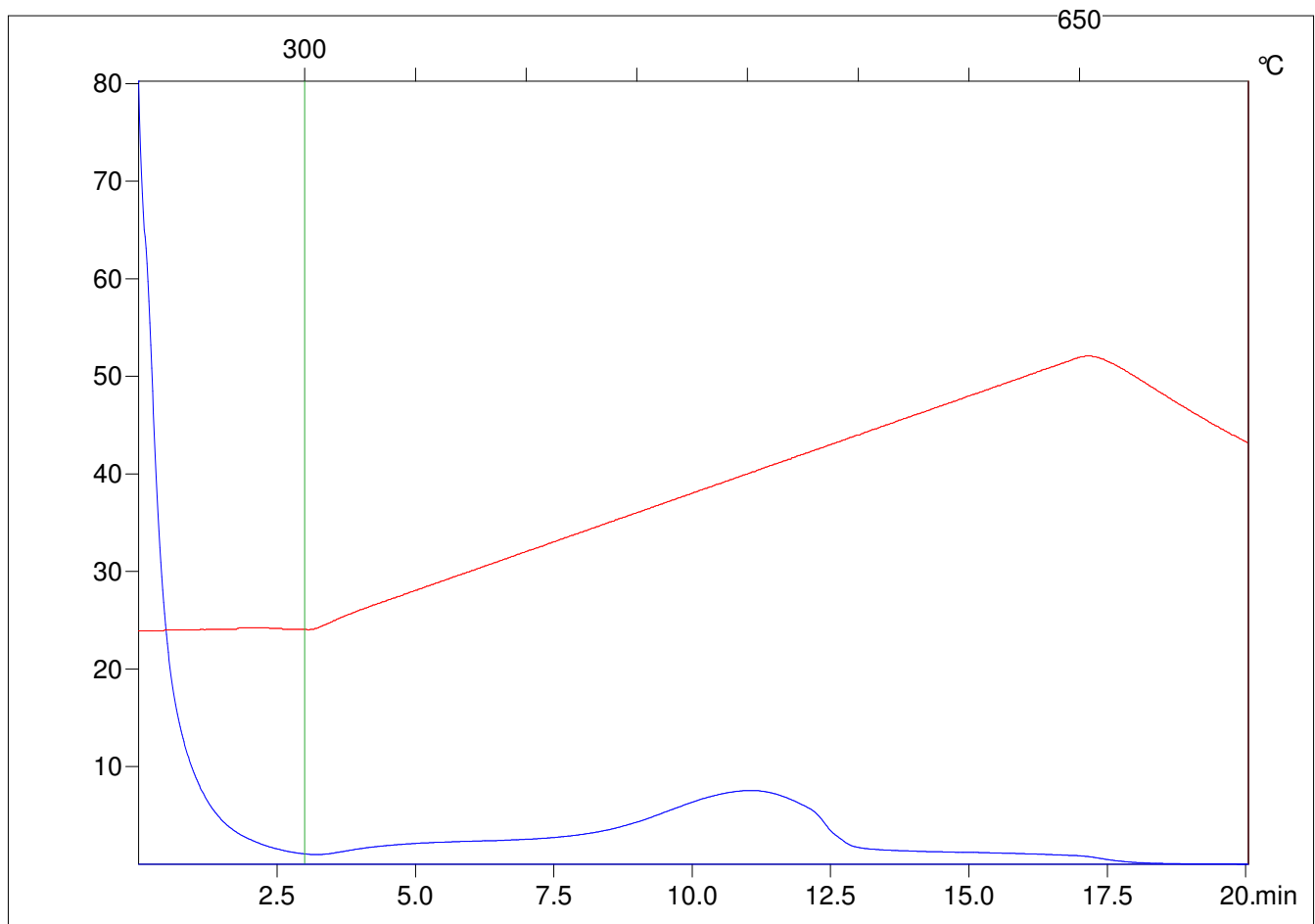
Method =Bulk Rock

Cycle=Basic

KFID(10*9)=1444

Qty =70.7

TOC=6.13



C:\VINC\PK2_1792\PK085.R00 : FID pyrolysis graphic

State Ok

Pyro Status Ok

Oxi Status Negative value